

JDJ

An abstract painting featuring a central profile of a face rendered in light pink and white tones. The face is set against a background of vibrant, layered colors including teal, purple, and yellow-green. The composition is overlaid with a complex network of thick, expressive red lines that crisscross and loop across the entire scene, creating a sense of dynamic movement and depth. The overall style is expressive and gestural, characteristic of modernist or postmodernist art.

Jamie Gray Williams

Jamie Gray Williams

Working primarily in painting and drawing, Jamie Gray Williams utilizes fantasy and humor to explore questions about inter-subjective limits and the complex relationships of mind and body, imagination and reality, self and others.

Williams' paintings employ soft color fields which are overlaid with crisp, energetic brushwork in contrast to their backgrounds. From these lines, bodies start to emerge, as though the paintings are transforming before our very eyes. A swoop of paint becomes a pointed nose, an angular shape becomes the crook of an arm, a curved, expressive gesture becomes a hip.

Her wild and often humorous oil and acrylic paintings possess a canny energy and fluidity, beginning life as intuitively conjured drawings. Her work opens our eyes to a kind of physical theater, where our existence with and within the human body is exposed as an absurd and curious psychological experience.

Jamie Gray Williams (b. 1989, Evansville, IN; Lives and works in Philadelphia, PA) earned her MFA from Rutgers University in 2017, her BA from the University of Southern Indiana, and attended the Skowhegan School of Painting and Sculpture in 2015. Her work has recently been exhibited at Venus Over Manhattan, New York, Marvin Gardens, New York, PM/AM, London, and The Pit, Los Angeles among others.





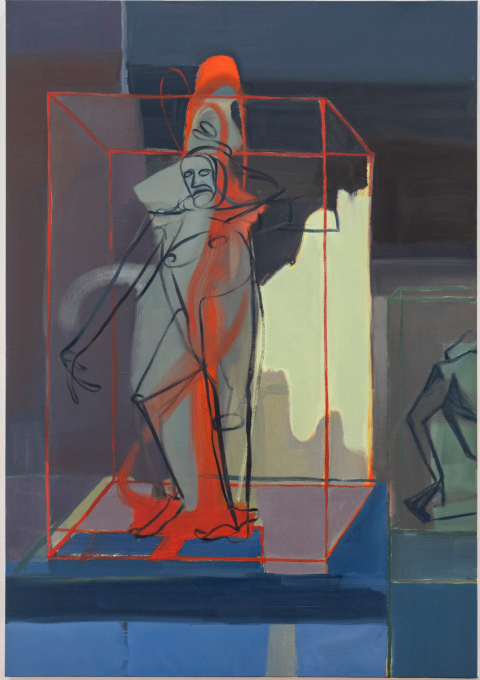
Jamie Gray Williams, *The Lips, the Teeth, the Tip of the Tongue*, Installation View, 2024



Jamie Gray Williams
The Godhead Fires (Pygmalion), 2024
Acrylic and oil on canvas
60 × 50 in



Jamie Gray Williams, *The Lips, the Teeth, the Tip of the Tongue*, Installation View, 2024



Left:
Jamie Gray Williams
Emergence, 2024
Acrylic and oil on canvas
60 × 42 in



Right:
Jamie Gray Williams
Nervous Systems, 2024
Acrylic and oil on canvas
60 × 42 in



Jamie Gray Williams, *The Lips, the Teeth, the Tip of the Tongue*, Installation View, 2024

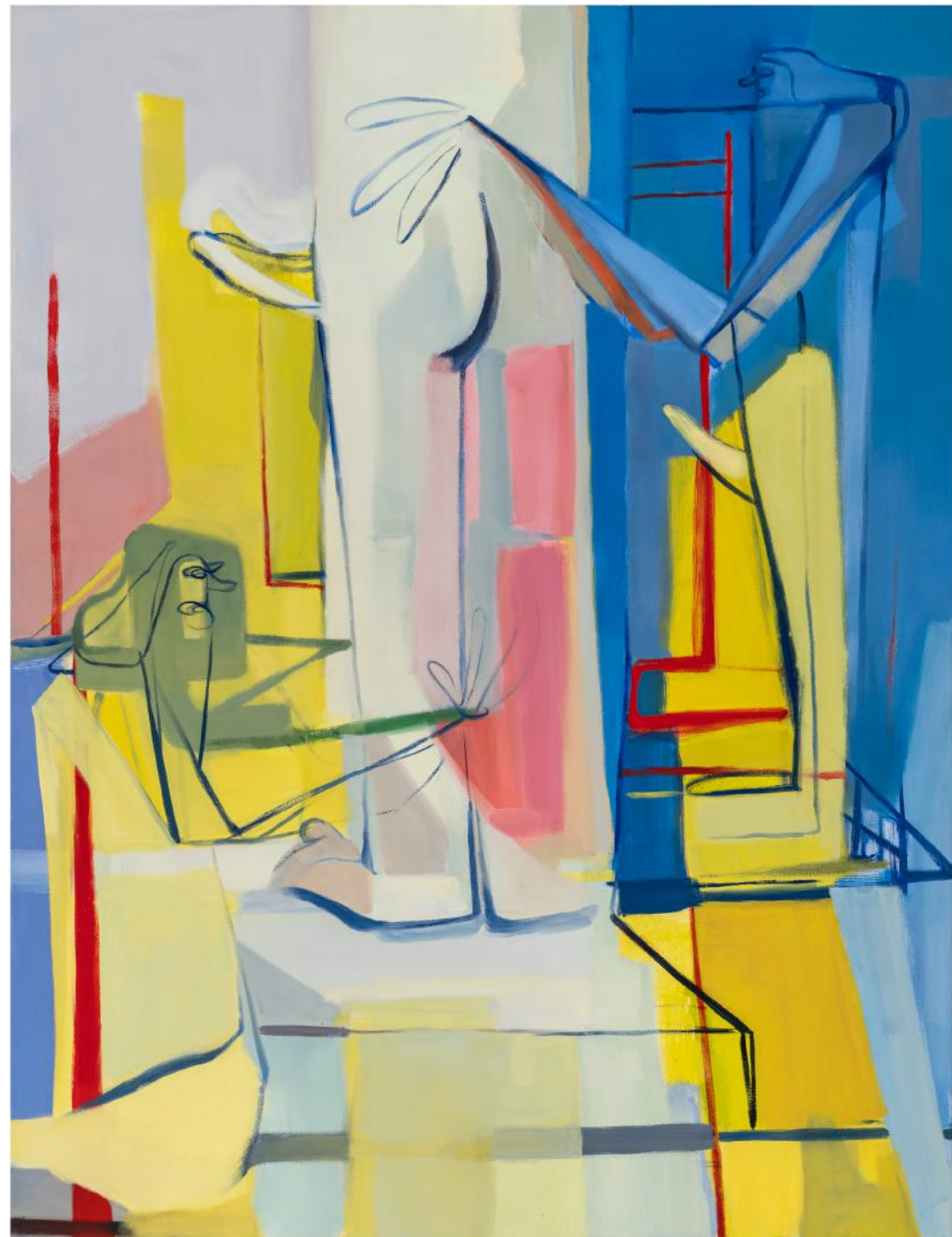
Jamie Gray Williams
Bachannal, 2022
Acrylic and oil on canvas
86 x 66 in





Jamie Gray Williams
Turn Me Loose, 2023
Acrylic and oil on canvas
32 x 26 in

Jamie Gray Williams
Smooth Operator, 2024
Acrylic and oil on canvas
86 × 66 in





Jamie Gray Williams
The Hand Refrains (Pygmalion), 2024
Acrylic and oil on canvas
60 × 50 in